

SENNU Kevät 3



Oil Pattern Distance: 38 Feet **Reverse Brush Drop:** 32 Feet **Oil Per Board:** 45 uL
Forward Oil Total: 11.16 mL **Reverse Oil Total:** 9.585 mL **Volume Oil Total:** 20.745 mL
Forward Boards Crossed: 248 Boards **Reverse Boards Crossed:** 213 Boards **Total Boards Crossed:** 461 Boards

	Start	Stop	Loads	Speed	Crossed	Start	End	Feet	T.Oil
1	4L	4R	2	18	66	0.0	2.5	2.5	2970
2	6L	6R	3	18	87	2.5	10.1	7.6	3915
3	9L	9R	1	22	23	10.1	13.2	3.1	1035
4	10L	10R	2	22	42	13.2	19.4	6.2	1890
5	12L	12R	1	26	17	19.4	23.0	3.6	765
6	14L	14R	1	26	13	23.0	26.6	3.6	585
7	2L	2R	0	30	0	26.6	38.0	11.4	0

Forward Reverse More

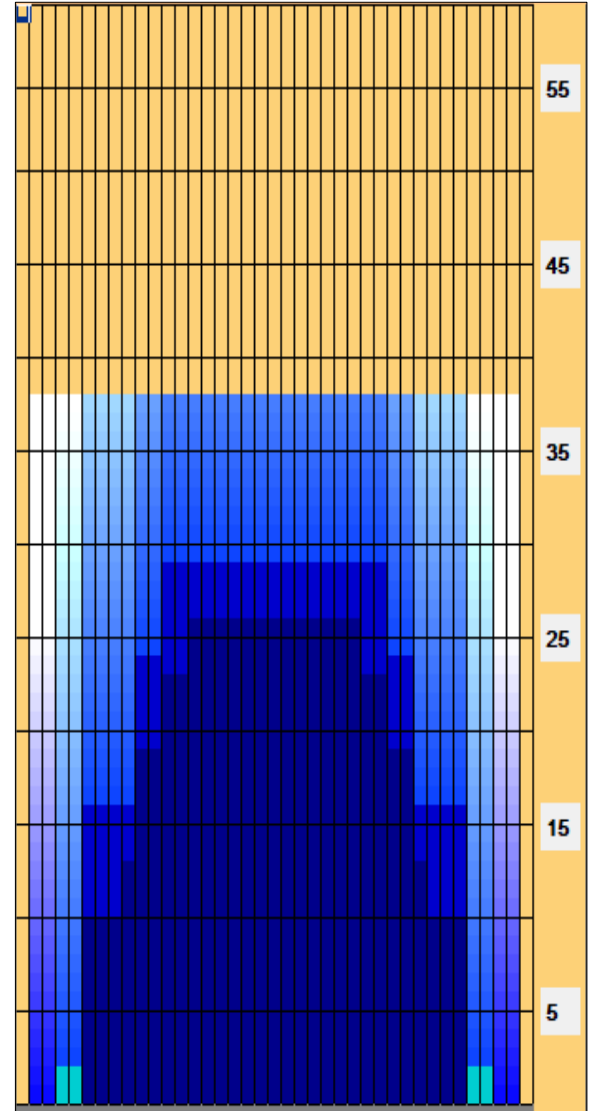
	Start	Stop	Loads	Speed	Crossed	Start	End	Feet	T.Oil
1	2L	2R	0	30	0	38.0	29.0	-9.0	0
2	12L	12R	2	18	34	29.0	23.9	-5.1	1530
3	10L	10R	3	18	63	23.9	16.3	-7.6	2835
4	6L	6R	4	14	116	16.3	8.4	-7.9	5220
5	2L	2R	0	14	0	8.4	0.0	-8.4	0

Forward Reverse More

Conditioner:
Type In or Select One

TransferType:
Type In or Select One

- Forward
- Reverse
- Combined
- Buff



This Pattern Up Loaded From Slot # 2 In Lane Machine On 17.2.2026 9.11

Item	3L-7L:18L-18R	8L-12L:18L-18R	13L-17L:18L-18R	18L-18R:17R-13R	18L-18R:12R-8R	18L-18R:7R-3R
Description	Outside Track:Middle	Middle Track:Middle	Inside Track:Middle	Middle: Inside Track	Middle:Middle Track	Middle:Outside Track
Track Zone Ratio	4.32	1.42	1.01	1.01	1.42	4.32

