

PP 2025



Oil Pattern Distance: 41 Feet **Reverse Brush Drop:** 35 Feet **Oil Per Board:** 40 uL
Forward Oil Total: 11.44 mL **Reverse Oil Total:** 10.04 mL **Volume Oil Total:** 21.48 mL
Forward Boards Crossed: 286 Boards **Reverse Boards Crossed:** 251 Boards **Total Boards Crossed:** 537 Boards

	Start	Stop	Loads	Speed	Crossed	Start	End	Feet	T.Oil
1	4L	4R	3	18	99	0.0	5.1	5.1	3960
2	7L	7R	1	18	27	5.1	7.6	2.5	1080
3	8L	8R	2	18	50	7.6	12.7	5.1	2000
4	10L	10R	3	18	63	12.7	20.3	7.6	2520
5	12L	12R	2	18	34	20.3	25.4	5.1	1360
6	14L	14R	1	22	13	25.4	28.5	3.1	520
7	2L	2R	0	22	0	28.5	41.0	12.5	0

	Start	Stop	Loads	Speed	Crossed	Start	End	Feet	T.Oil
1	2L	2R	0	30	0	41.0	33.0	-8.0	0
2	12L	12R	3	22	51	33.0	23.7	-9.3	2040
3	10L	10R	4	18	84	23.7	13.5	-10.2	3360
4	6L	6R	4	14	116	13.5	5.6	-7.9	4640
5	2L	2R	0	14	0	5.6	0.0	-5.6	0

Conditioner:
Type In or Select One

TransferType:
Type In or Select One

Forward



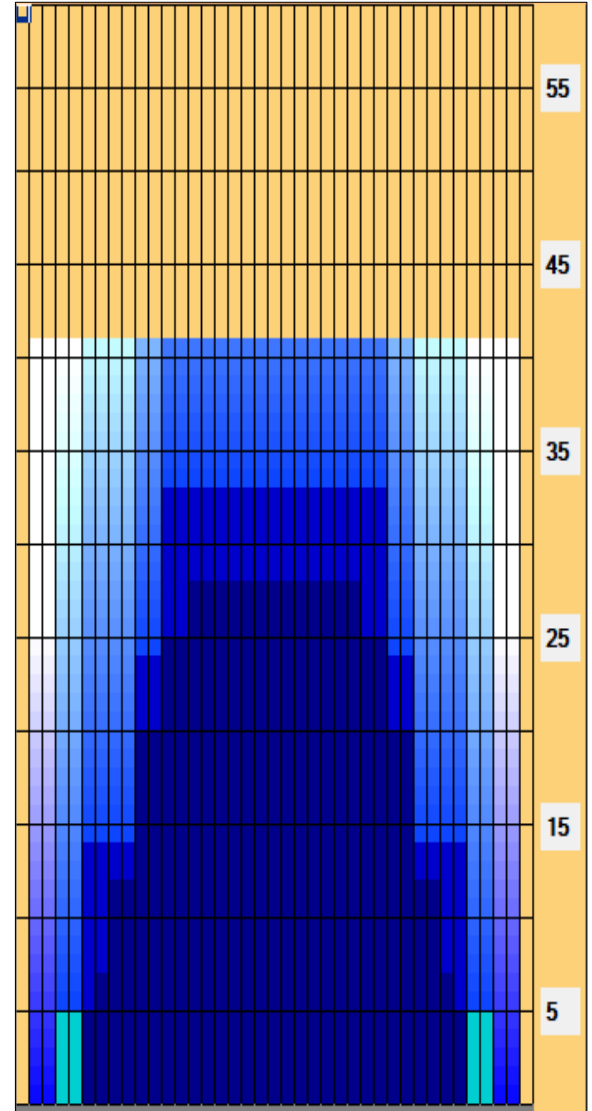
Reverse



Combined



Buff



Item Description	3L-7L:18L-18R Outside Track:Middle	8L-12L:18L-18R Middle Track:Middle	13L-17L:18L-18R Inside Track:Middle	18L-18R:17R-13R Middle: Inside Track	18L-18R:12R-8R Middle:Middle Track	18L-18R:7R-3R Middle:Outside Track
Track Zone Ratio	5.48	1.51	1.01	1.01	1.51	5.48

